

Pearl⁴
SEENGEN



Pearl ⁴

SEENGEN



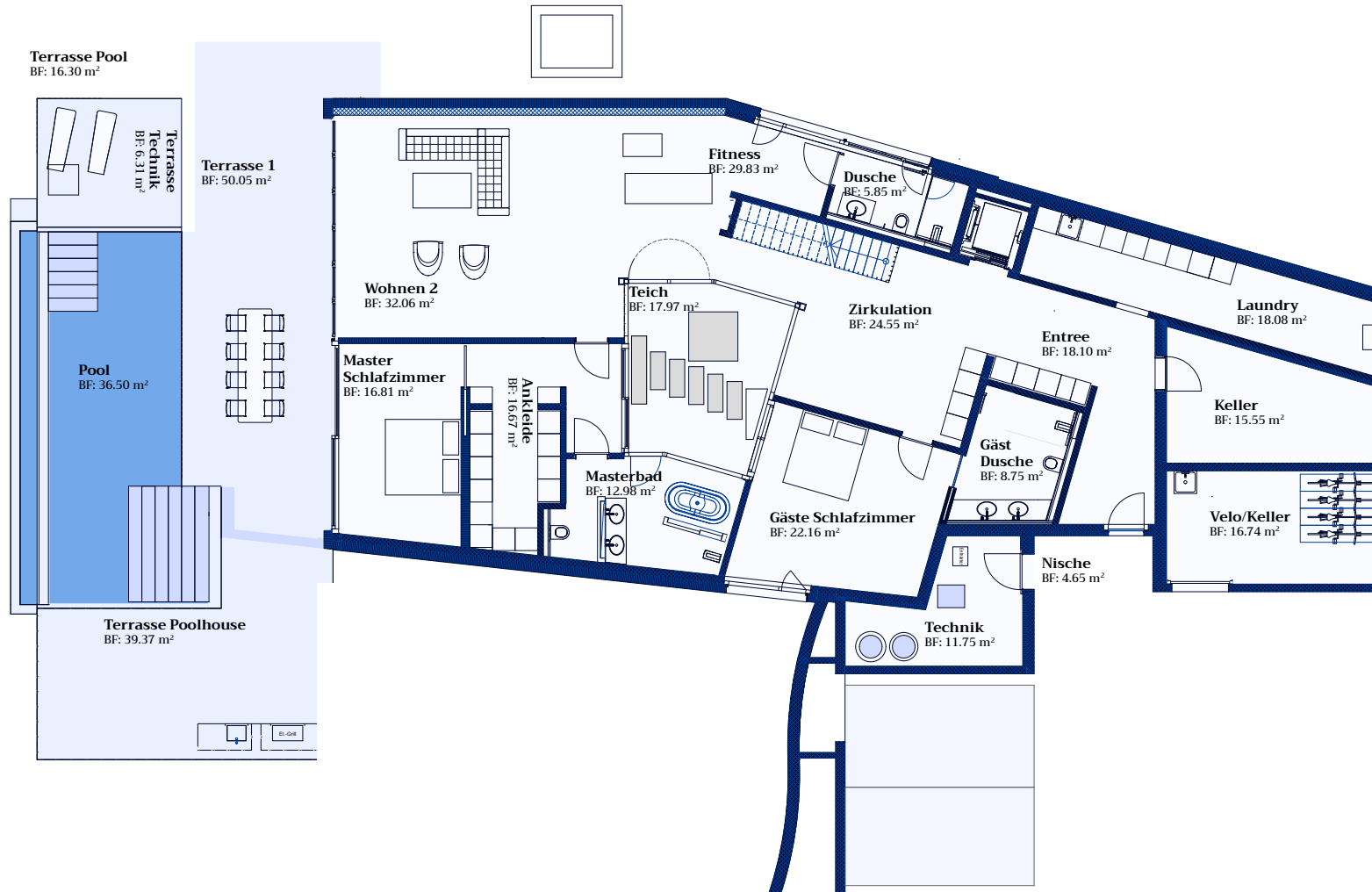
ÜBERSICHT

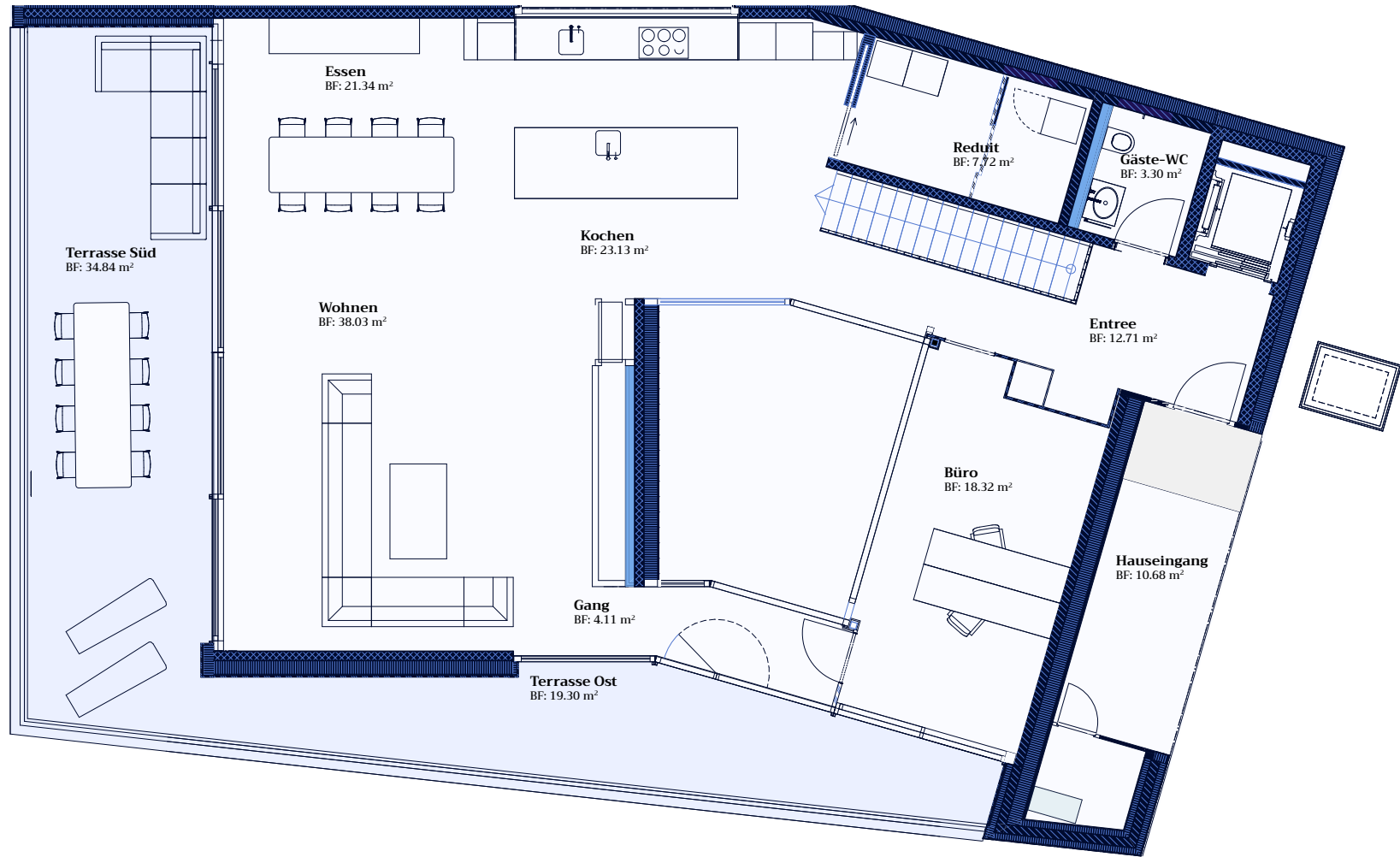
Zimmer	: 7
Parzelle	: 838
Wohnfläche (netto)	: 379 m ²
Terrasse	: 235 m ²
Garten	: 530 m ²

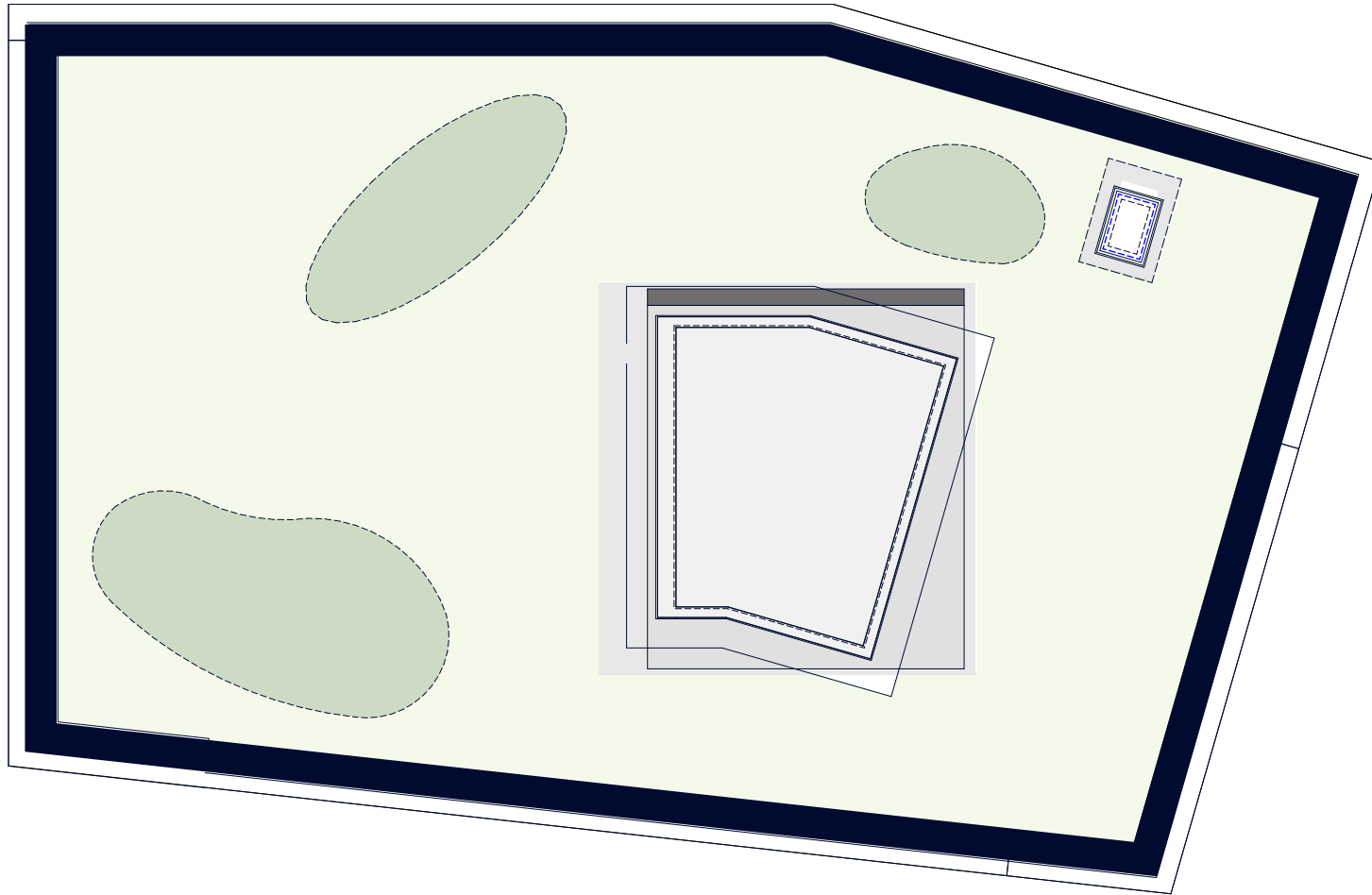
ADRESSE

Panoramaweg 7c,
5707 Seengen











Pearl
SEENGEN



SEEBERG

Verkauf und Beratung

Seeberg Services AG

Paradiesgässli 2, 6004 Luzern

T. +41 62 834 50 68

info@sbrg.ch / www.sbrg.ch