

Pearl¹

SEENGEN



Pearl¹

SEENGEN



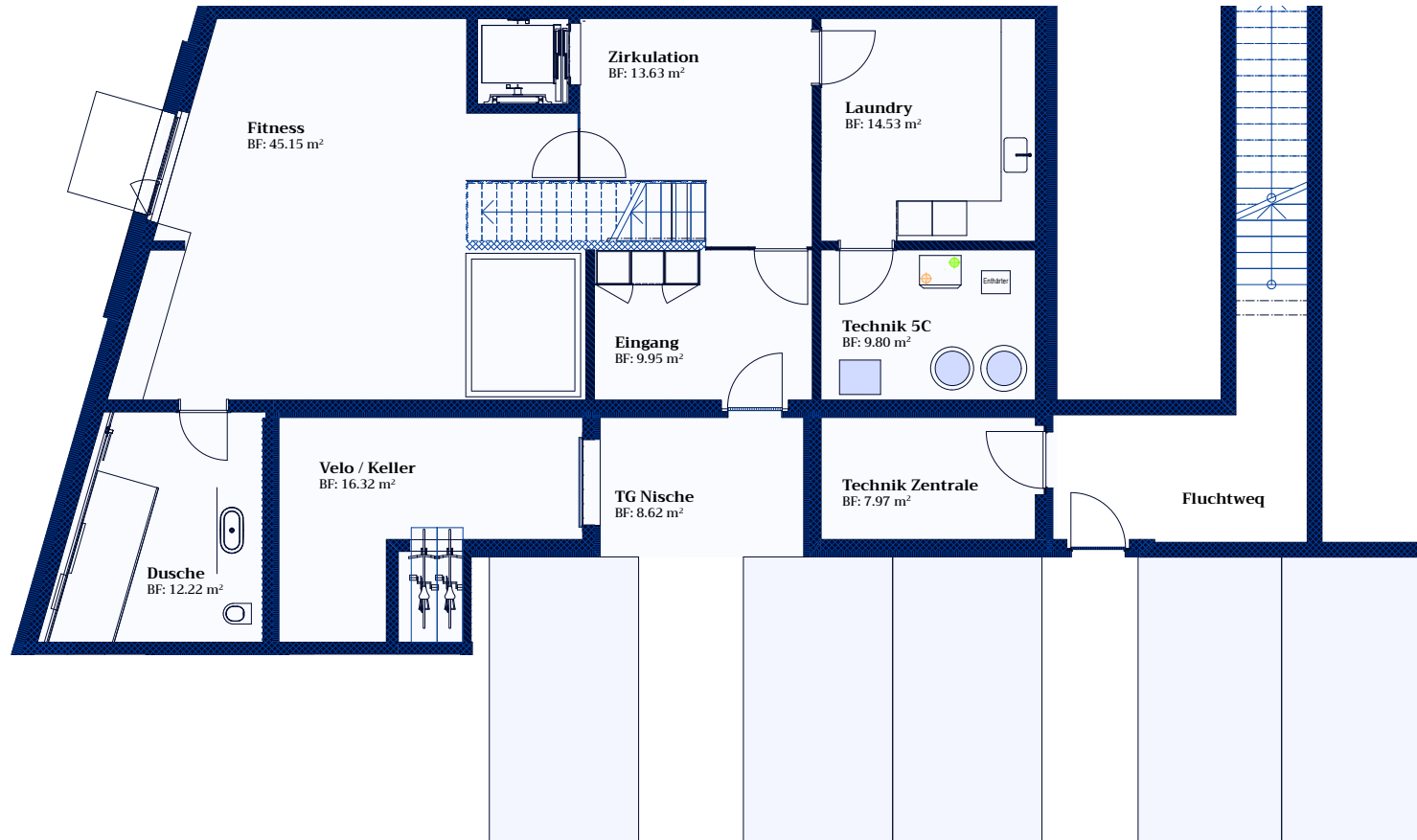
ÜBERSICHT

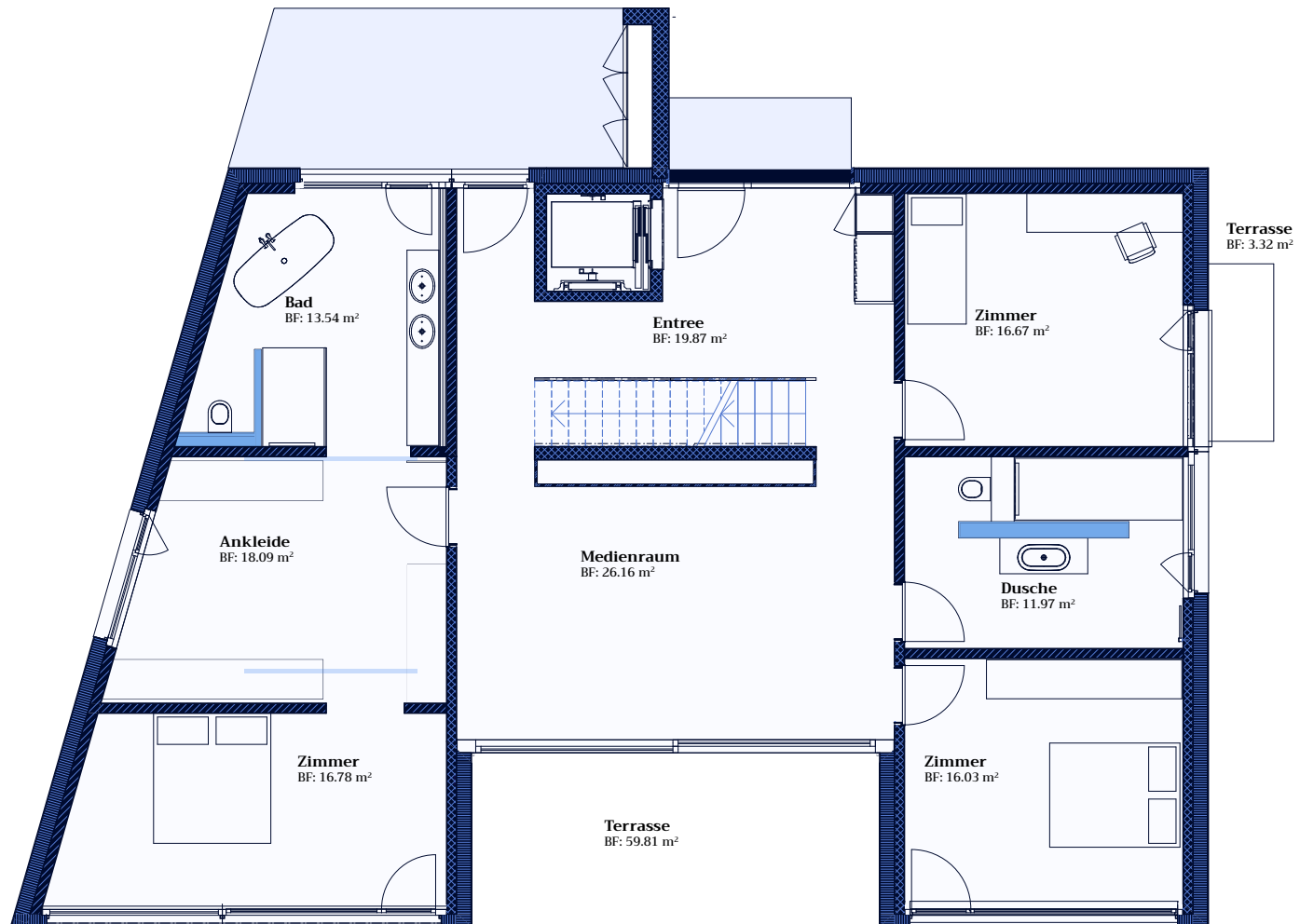
Zimmer	: 7
Parzelle	: 646
Wohnfläche (netto)	: 377 m ²
Terrasse	: 273 m ²
Garten	: 450 m ²

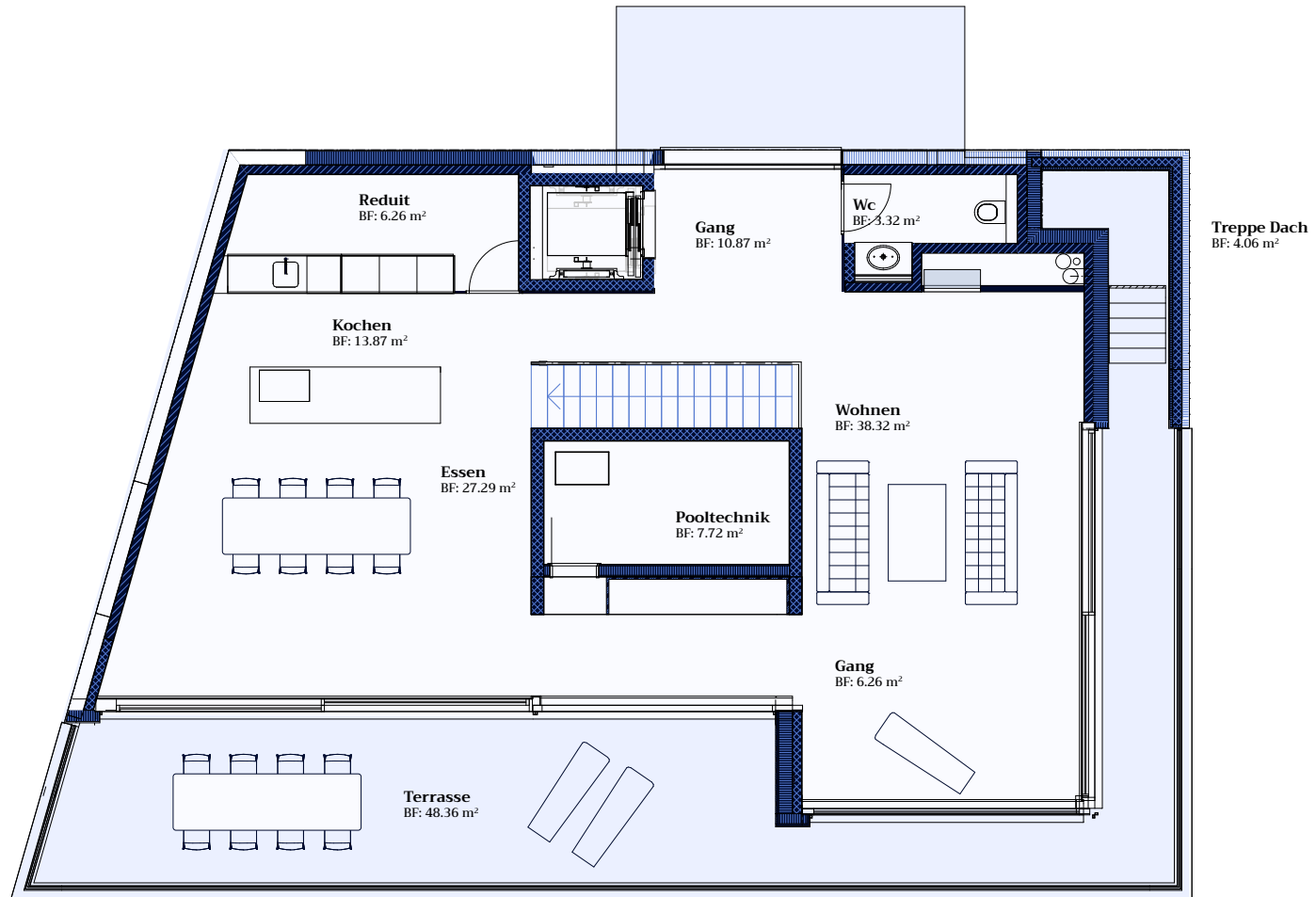
ADRESSE

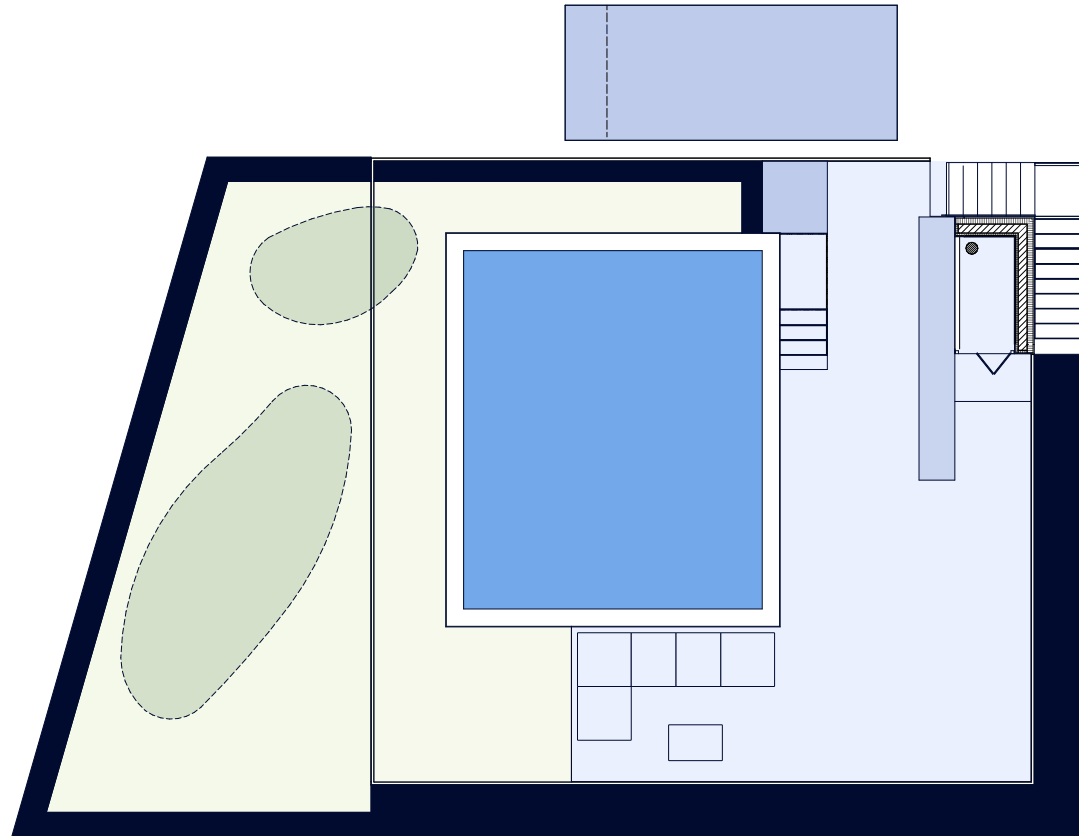
Panoramaweg 5c,
5707 Seengen











- Dachgeschoss





Pearl
SEENGEN



SEEBERG

Beratung und Verkauf

Seeberg Services AG

Paradiesgässli 2, 6004 Luzern

T. +41 62 834 50 68

info@sbrg.ch / www.sbrg.ch